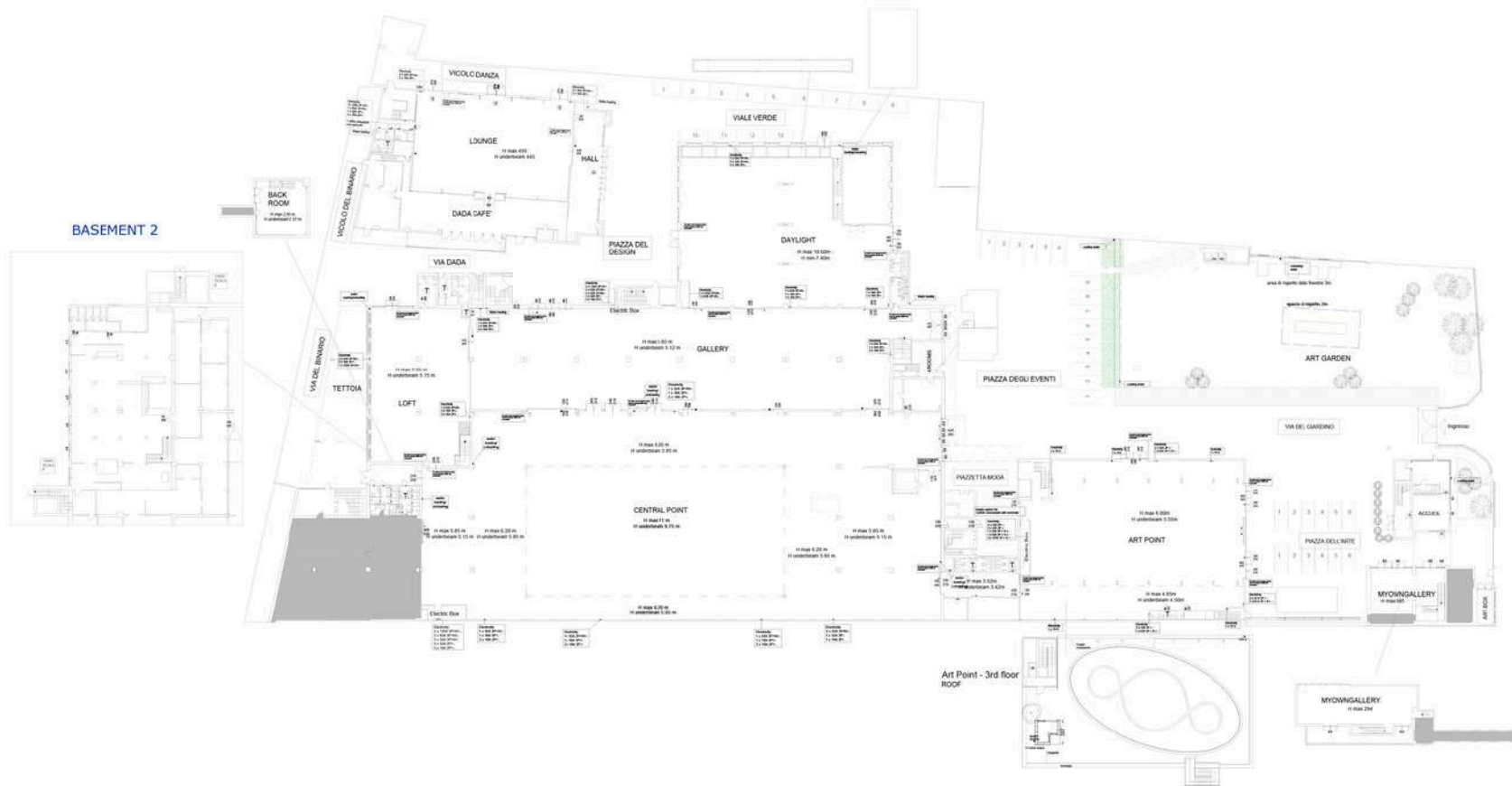




Superstudio Più

Technical data sheet



SUPERSTUDIO PIÙ

Black Point

DIMENSIONS

Area: 827 sqm

Dimensions: 35.13 x 24.70 m

H max *Zone A*: 6 m

H min/underbeam *Zone A*: 5.55 m

H min *Zone B*: 4.50 m

H max *Zone B*: 4.85 m

CAPACITY

Conference: 1000 pax

Gala dinner: 450 pax

Standing: 450 pax

ELECTRIC POWER

200 kw

UPS 500 kw

Generating set 500 kw

HANGING POINTS

700 kg for the primary and secondary beam

EMERGENCY EXITS

7 emergency doors

EXTRA NOTES

The space does not feature water connections, drainage, or a bathroom with disabled access. There is no exterior LED wall, and no stairs are present within the area. The floor has a load capacity of 400 kg per square meter.

It is a total black environment, characterized by eight iron columns on the left side and seven on the right. The space can be integrated with the Courtyard Piazza dell'Arte and offers a private entrance from Via Tortona 27/bis, subject to availability. Additionally, it is well connected to the Central Point space via a black corridor.

ELECTRICITY

1 x 400 ampere - 400V

2 x 125 ampere - 400V

4 x 63 ampere - 400V

1 x 32 ampere - 400V

11 x 32 ampere - 230V

2 x 16 ampere - 230V

6 x 10 ampere - 230V

AIR/HEATING SISTEM

HVAC 20.000 [mc/h]

Remote system regulation humidity, temperature and air recycling

LIGHTING

White led dimmable via DALI

60 W power per light

4.000 Kelvin

CONNECTIVITY

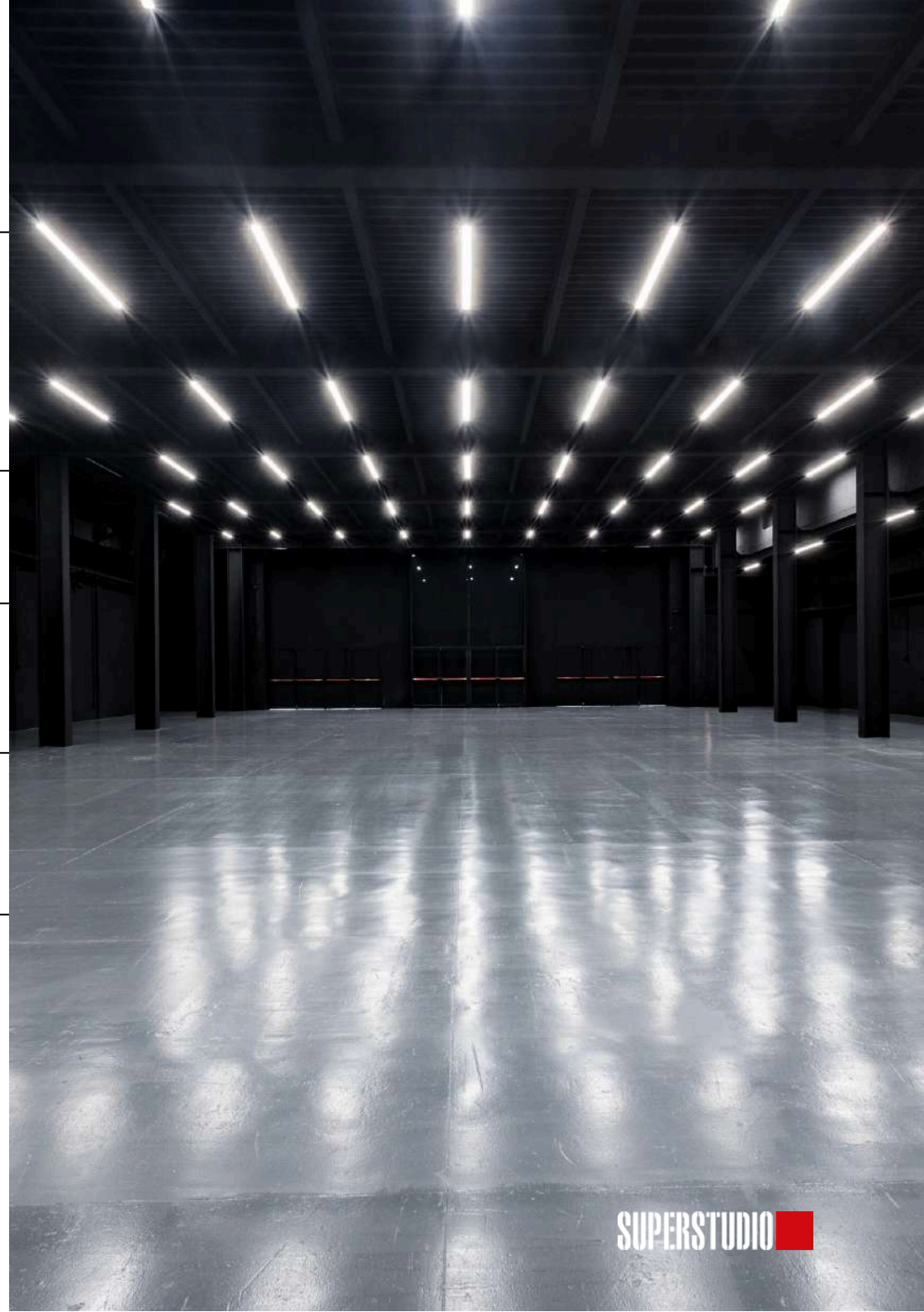
Free WI-FI 300 Mbps - limited 30 Mbps / client

Dedicated WI-FI for the event

TOILETS

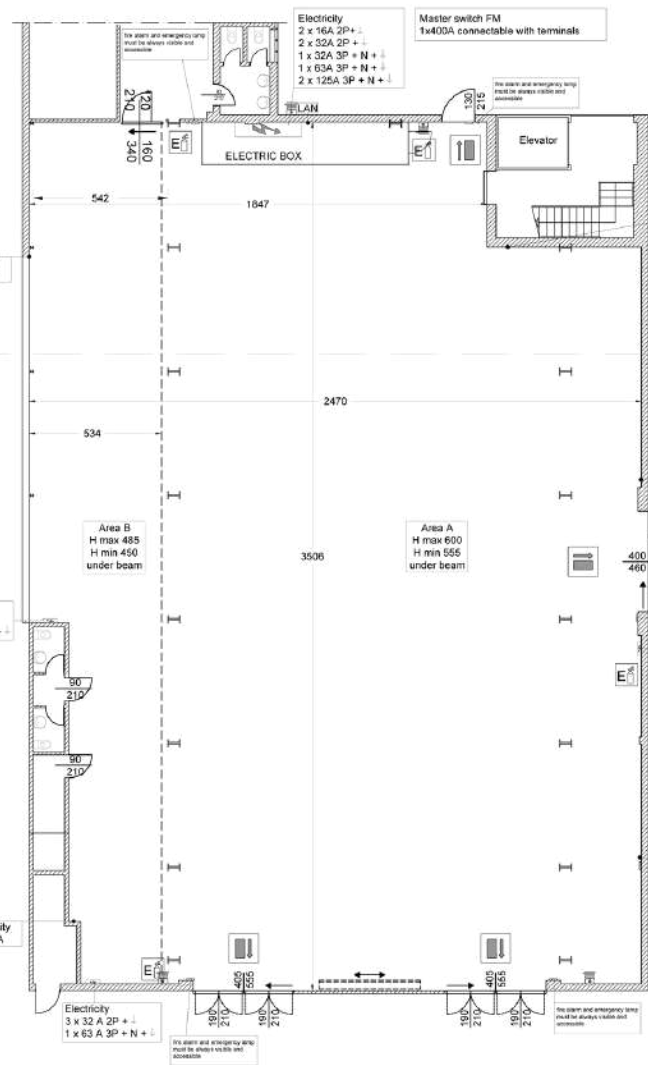
2 toilets in the main room

6 extra toilets integrable based on availability

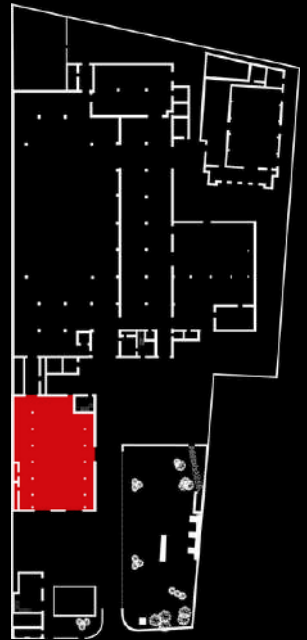
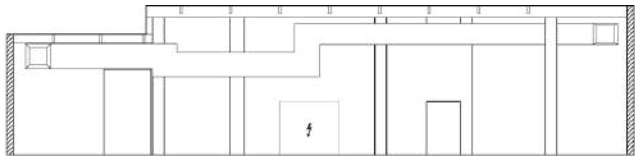


Black Point

TOP VIEW



SECTION A - A'



SUPERSTUDIO PIÙ

Central Point

DIMENSIONS

Area: 2.520 sqm

Dimensions: 80.40 x 32.25 m

UPPER PART

H max: 11.10 m

H max underbeam: 9.75 m

LOWER PART

H max: 6.20 m

H max underbeam: 5.85 m

CAPACITY

Conference: 1800 pax

Gala dinner: 1200 pax

Standing: 1800 pax

ELECTRIC POWER

220 kw

UPS 500 kw

Generating set 500 kw

HANGING POINTS

CAUTION: HANGING CAN ONLY AND EXCLUSIVELY BE DONE NEAR THE KNOTS

- Knots on the beam lowering max 250 kg
- In the middle of the american-beams max 200 kg

EMERGENCY EXITS

11 emergency doors

EXTRA NOTES

The space is equipped with water connections, including both supply and drainage systems. It features an outdoor LED wall with a 3.9 mm pitch, measuring 6500 x 1000 mm, with a resolution of 1664 x 256 pixels and a brightness level of 5000 Nits. The floor supports a load capacity of up to 600 kg per square meter.

Entirely step-free, the area ensures full accessibility with no stairs present. Inside, the venue offers a total white setting, highlighted by four circular columns positioned at its center. It boasts dual private entrances—one from Piazza Eventi and the other from Via del Binario. Additionally, it connects seamlessly to the adjacent Gallery space through three large sliding gates.

ELECTRICITY

1 x 400 ampere - 400V

2 x 125 ampere - 400V

2 x 63 ampere - 400V

9 x 32 ampere - 400V

4 x 16 ampere - 400V

5 x 32 ampere - 230V

15 x 16 ampere - 230V

4 x 16 ampere - 230V

AIR/HEATING SISTEM

HVAC 68.000 [mc/h]

Remote system regulation humidity, temperature and air recycling

LIGHTING

White led - non dimmable

216 W power per light

4.000 Kelvin

CONNECTIVITY

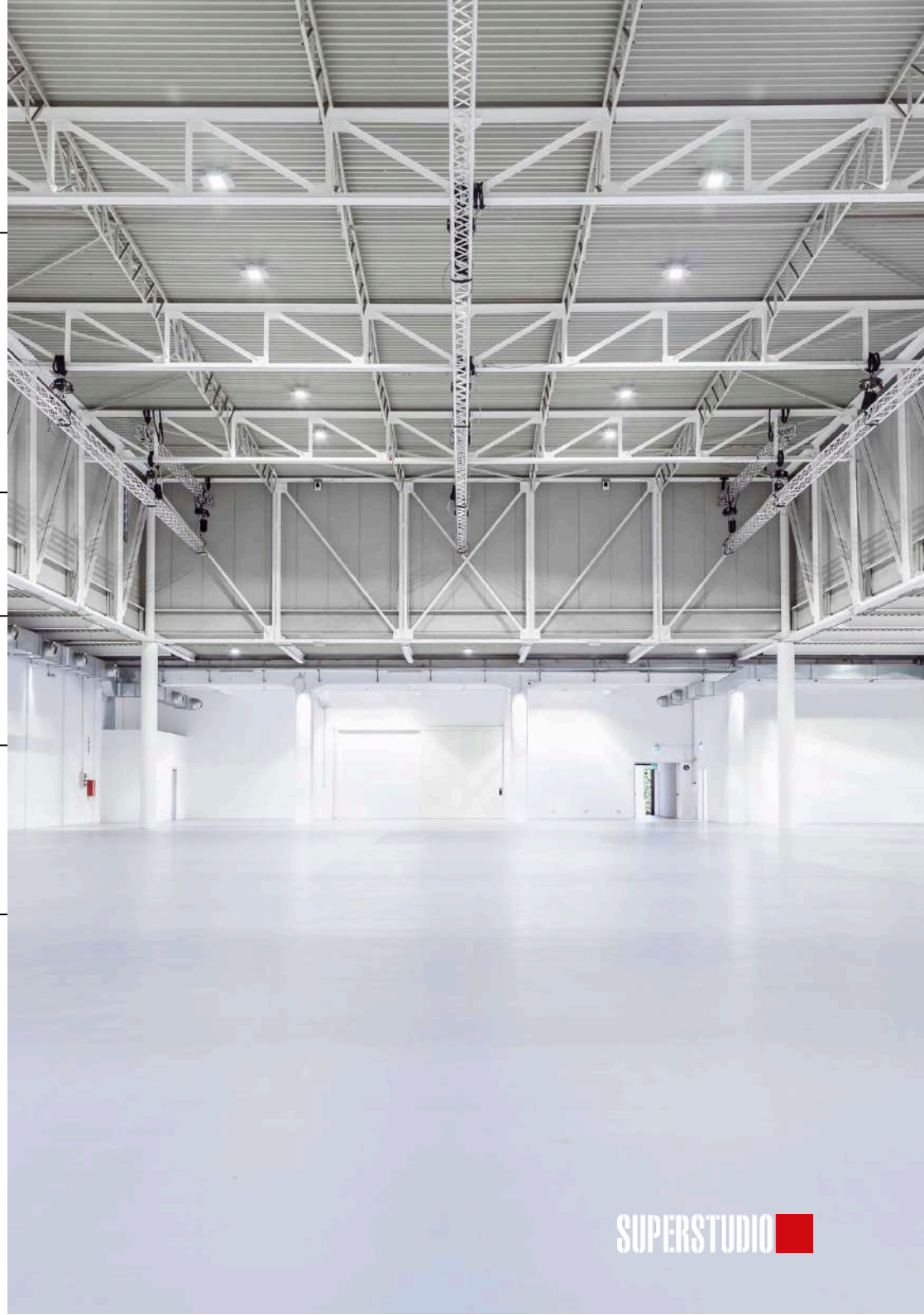
Free WI-FI 300 Mbps - limited 30 Mbps / client

Dedicated WI-FI for the event

TOILETS

2 toilets in the main room

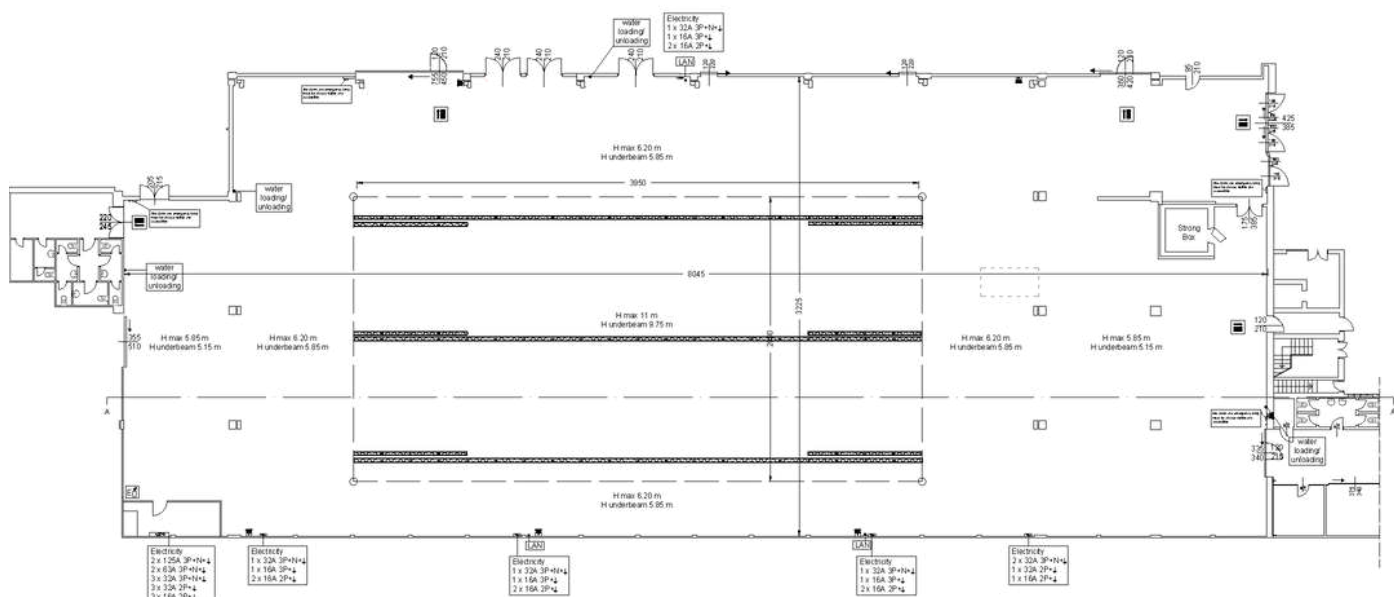
6 extra toilets integrable based on availability



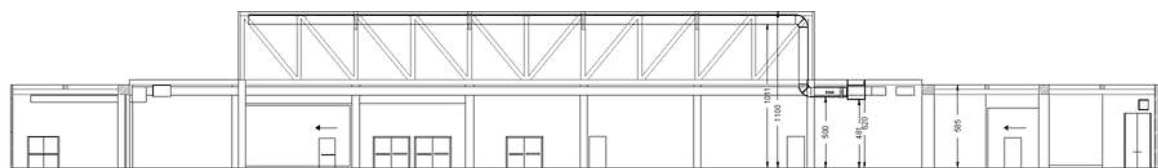
SUPERSTUDIO PIÙ

Central Point

TOP VIEW



SECTION A - A'



SUPERSTUDIO PIÙ

Daylight

DIMENSIONS

Area: 802 sqm
Space: 712 sqm
Dimensions space: 32.25 x 24.95 m
Dimensions loft: 7.25 x 12.15 m
H max: 10.60 m
H underbeam: 7.42 m
H over loft, underbeam: 3.98 m
H under loft: 3.31 m

CAPACITY

Conference: 400 pax
Gala dinner: 450 pax
Standing: 500 pax

ELECTRIC POWER

150 kw
UPS 500 kw
Generating set 500 kw

HANGING POINTS

350 kg on the Knots of the primary beam

EMERGENCY EXITS

4 emergency doors

EXTRA NOTES

The space is equipped with water supply, drainage, and load connections. An outdoor LED wall is installed, featuring a 3.9 mm pixel pitch, measuring 8500 x 1000 mm, with a resolution of 2176 x 256 pixels and a brightness level of 5000 Nits. Both the ground floor and the mezzanine level support a load capacity of 400 kg per square meter. This total white space is characterized by three central columns and offers dual private entrances—one from Piazza Dada and the other from Piazza del Design—which can be integrated depending on availability. The area is well connected to the Gallery space via three large sliding gates. A loft area runs along the length of the space, featuring a long walkway constructed with an iron frame and finished with parquet flooring.

ELECTRICITY

1 x 400 ampere - 400V
1 x 125 ampere - 400V
2 x 63 ampere - 400V
1 x 32 ampere - 400V
3 x 16 ampere - 400V
3 x 16 ampere - 230V
15 x 10 ampere - 230V

AIR/HEATING SYSTEM

HVAC 23.000 [mc/h]
Remote system regulation humidity, temperature and air recycling

LIGHTING

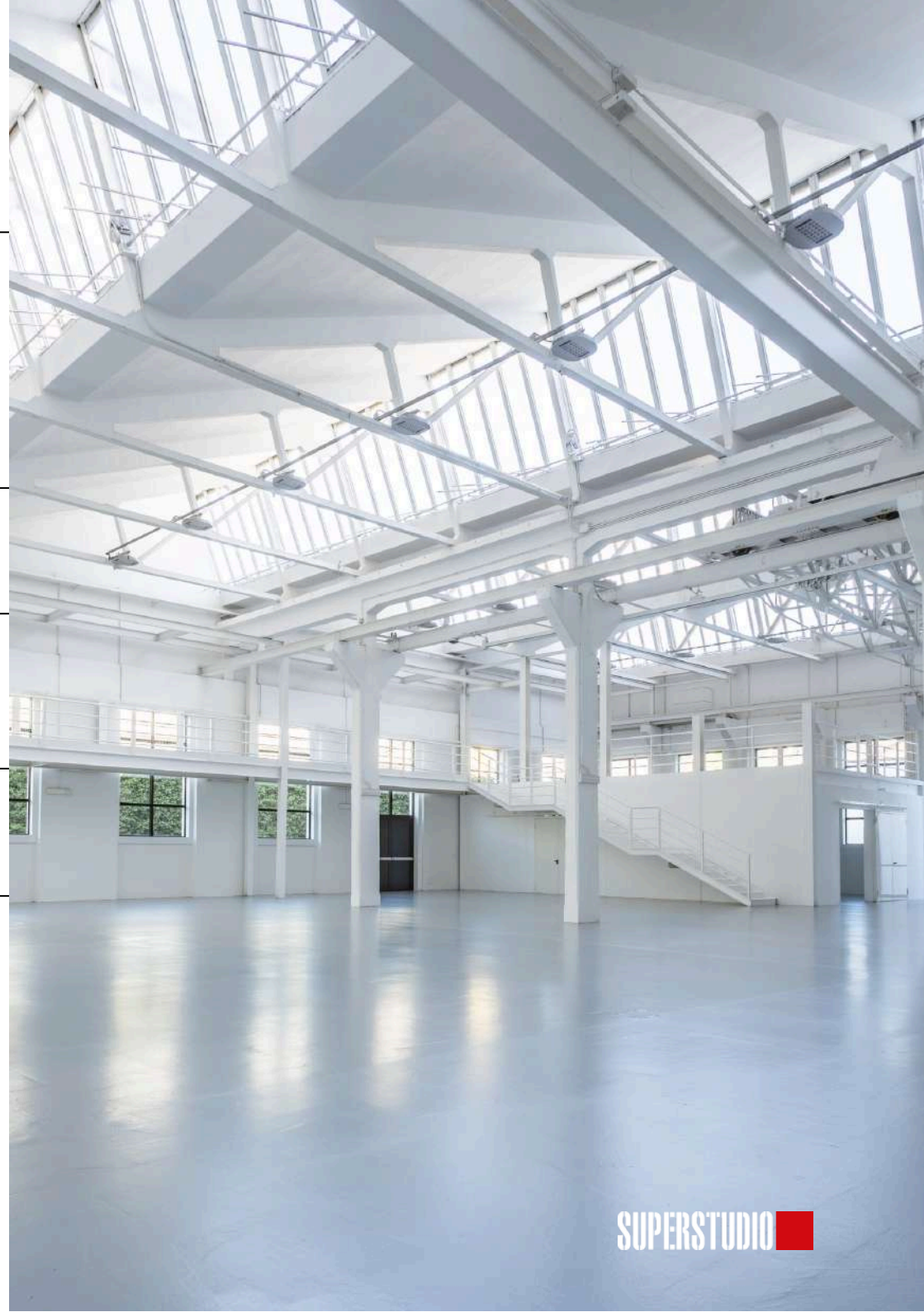
White led - non dimmable - switch on/off: line by line
216 W power per light
4.000 Kelvin

CONNECTIVITY

Free WI-FI 300 Mbps - limited 30 Mbps / client
Dedicated WI-FI for the event

TOILETS

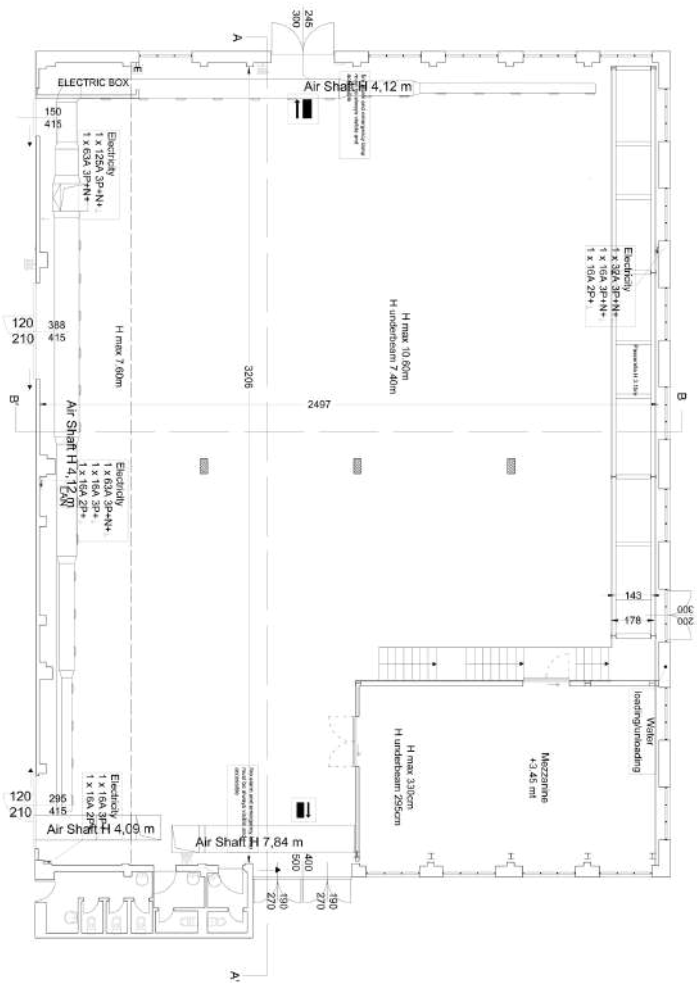
2 toilets in the main room with a disabled bathroom
3extra toilets integrable based on availability



SUPERSTUDIO PIÙ

Daylight

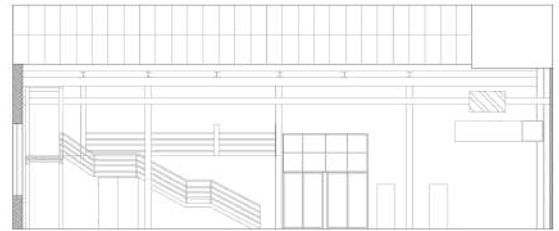
TOP VIEW



SECTION A - A'



SECTION B - B'



SUPERSTUDIO PIÙ

Rooftop

DIMENSIONS

Area: 700 sqm

Dimensions: 35.00 x 19.80 m

CAPACITY

standing: 150 pax

EMERGENCY EXITS

1 emergency doors

TOILETS

1 toilet

EXTRA NOTES

There is an emergency exit. There are interior stairs and an elevator to get the roof.

ELECTRICITY

3 x 125 ampere

4 x 63 ampere

2 x 16 ampere

12 x 32 ampere

5 x 10 ampere

CONNECTIVITY

Free WI-FI 300 Mbps - limited 30 Mbps
/ client

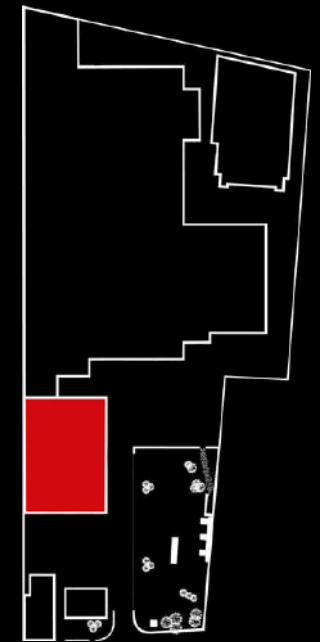
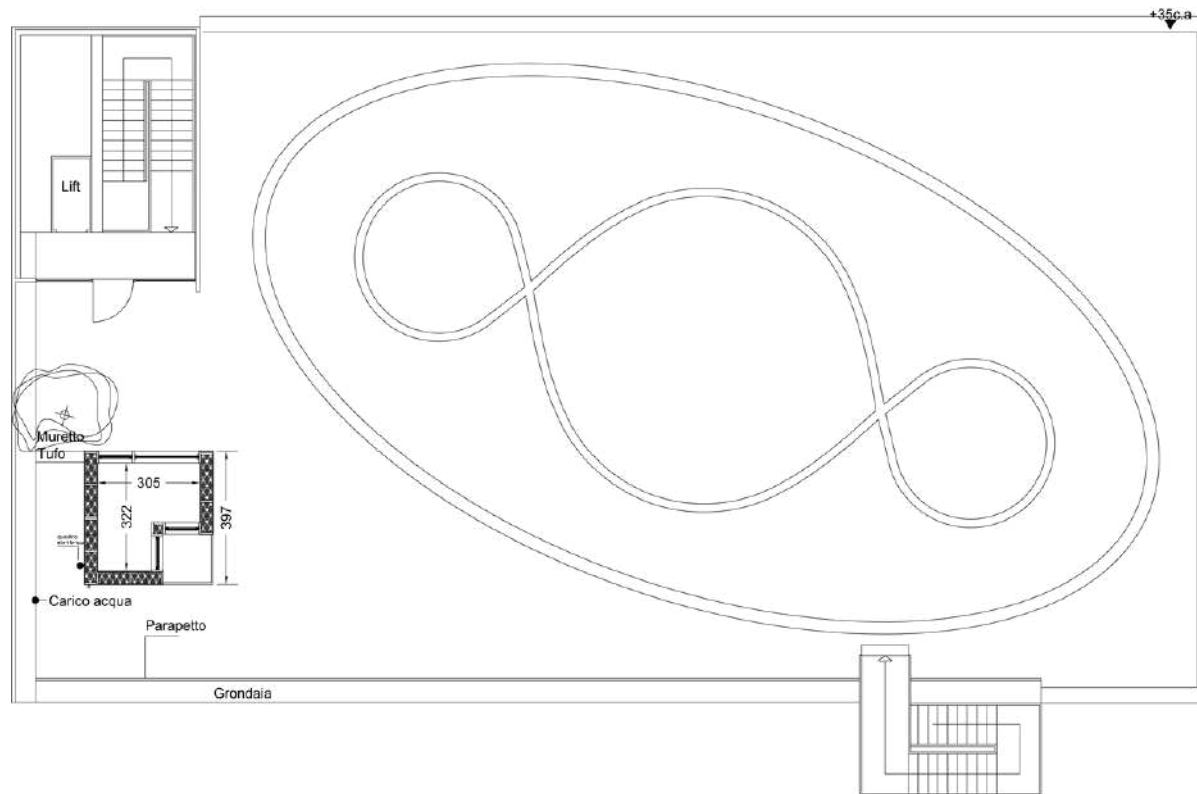
Dedicated WI-FI for the event



SUPERSTUDIO PIÙ

Rooftop

TOP VIEW



SUPERSTUDIO PIÙ

Gallery

DIMENSIONS

Area: 1052 sqm
Dimensions: 64.80 x 15.65 m
H max: 5.85 m
H max underbeam: 5.12 m

CAPACITY

Gala dinner: 500 pax
Standing: 850 pax

ELECTRIC POWER

200 kw
UPS 500 kw
Generating set 500 kw

HANGING POINTS

100 kg at the center of the angle-iron
fixed on the beam

EMERGENCY EXITS

5 emergency doors

EXTRA NOTES

The space is equipped with water supply, load, and drainage connections. However, it does not include a bathroom with disabled access. An outdoor LED wall is installed, featuring a 3.9 mm pitch, measuring 4250 x 1000 mm, with a resolution of 1024 x 256 pixels and a brightness level of 5000 Nits. Inside, the space offers a total white finish and is characterized by seven centrally positioned concrete columns.

The floor supports a load capacity of 600 kg per square meter. It provides dual private access from both Piazza Dada and Piazza del Design, which can be integrated depending on availability. The space is seamlessly connected to both the Central Point and the Daylight areas via several large sliding gates. The space is entirely step-free, ensuring full accessibility throughout.

ELECTRICITY

1 x 400 ampere - 400V
2 x 125 ampere - 400V
2 x 63 ampere - 400V
5 x 32 ampere - 400V
1 x 16 ampere - 400V
1 x 32 ampere - 230V
6 x 16 ampere - 230V

AIR/HEATING SISTEM

HVAC 17.000 [mc/h]
Remote system regulation humidity,
temperature and air recycling

LIGHTING

White led - not dimmable - switch on/off:
in three blocks
216 W power per light
4.000 Kelvin

CONNECTIVITY

Free WI-FI 300 Mbps - limited 30 Mbps
/ client
Dedicated WI-FI for the event

TOILETS

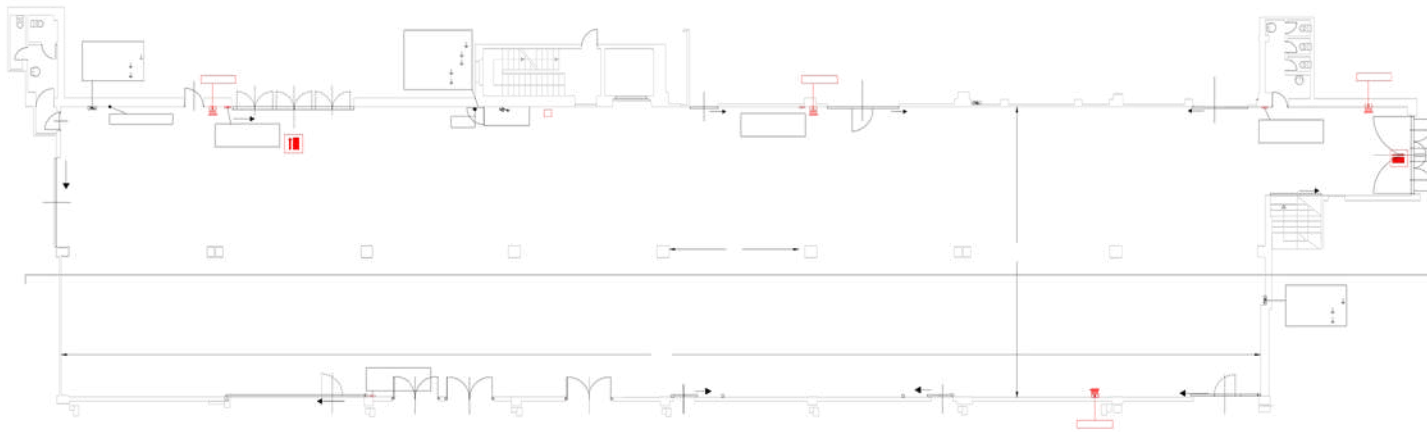
5 toilets in the main room
Extra toilets integrable based on
availability



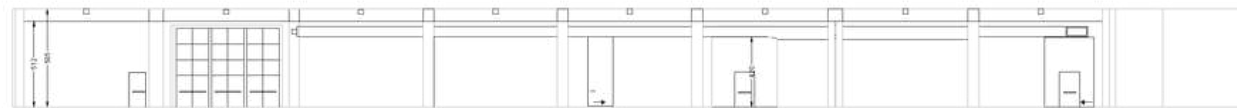
SUPERSTUDIO PIÙ

Gallery

TOP VIEW



SECTION A - A'



SUPERSTUDIO PIÙ

Lounge

DIMENSIONS

Area: 371 sqm
Dimensions: 24.30 x 15.40 m
H max: 4.95 m
H max underbeam: 4.45 m

CAPACITY

Conference: 250 pax
Gala dinner: 200 pax
Standing: 300 pax

ELECTRIC POWER

150 kw
UPS 500 kw
Generating set 500 kw

HANGING POINTS

200 kg in the middle of the beam in
support on the main beams

EMERGENCY EXITS

3 double emergency doors

EXTRA NOTES

The space is not equipped with water supply or drainage connections, and no built-in LED wall is available. The floor, finished in light parquet, supports a load capacity of 200 kg per square meter. The area is column-free and entirely step-free, ensuring easy accessibility and an open, flexible layout. It benefits from a direct connection to Piazza del Design through a stunning glazed foyer and is adjacent to the Dada restaurant, which is accessible directly from the same foyer.

ELECTRICITY

1 x 400 ampere - 400V
1 x 125 ampere - 400V
1 x 63 ampere - 400V
6 x 32 ampere - 400V
4 x 16 ampere - 400V
1 x 32 ampere - 230V
2 x 16 ampere - 230V
5 x 16 ampere - 230V

AIR/HEATING SISTEM

6 fan-coils to 1.300 mc/h cad
VCM system for regulation humidity
and air recycling

LIGHTING

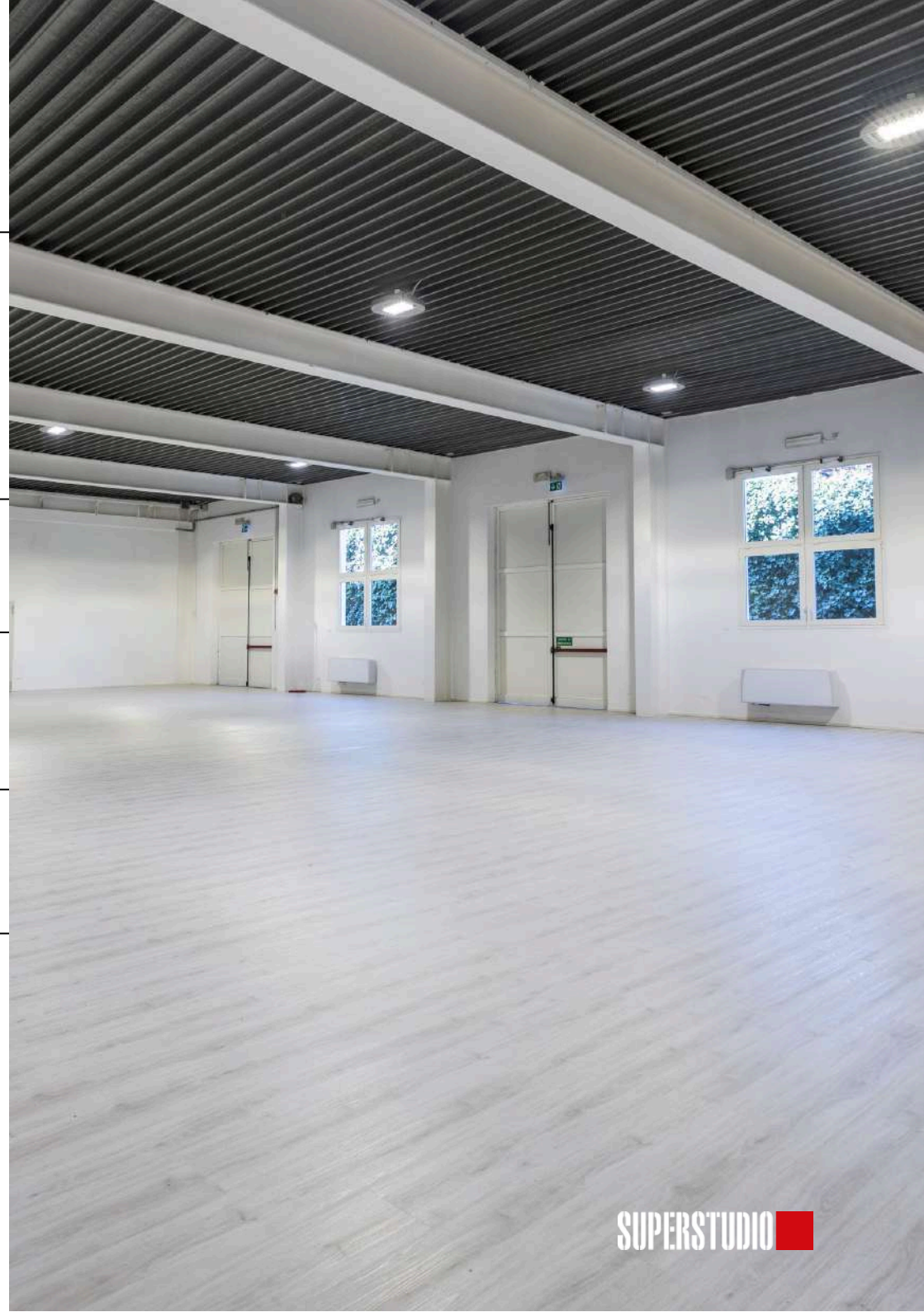
White led - not dimmable - switch on/off:
line by line
216 W power per light
4.000 Kelvin

CONNECTIVITY

Free WI-FI 300 Mbps - limited 30 Mbps
/ client
Dedicated WI-FI for the event

TOILETS

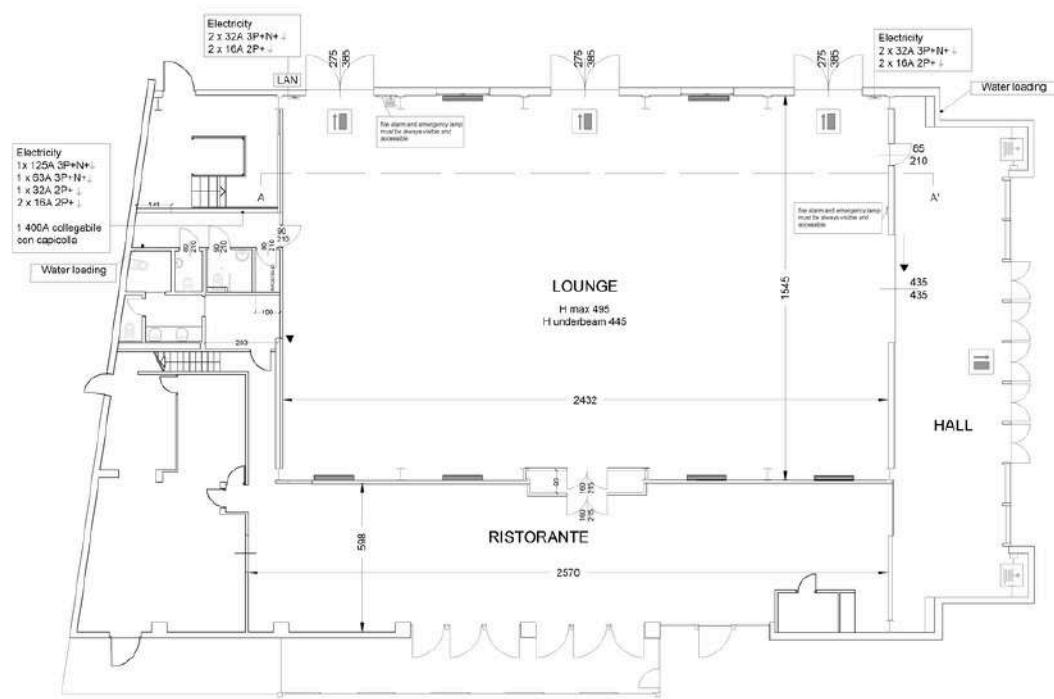
2 toilets in the main room with one of
them is disabled bathroom
No extra toilets integrable based
on availability



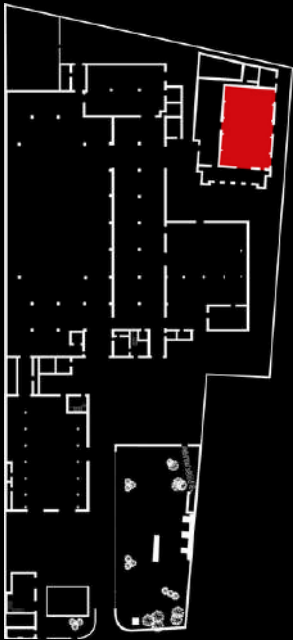
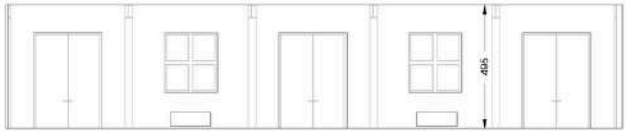
SUPERSTUDIO PIÙ

Lounge

TOP VIEW



SECTION A - A'



Loft

DIMENSIONS

Area: 362 sqm
Dimensions: 24.30 x 15.60 m
H max: 5.85 m
H min/underbeam: 5.15 m
H min under air conditioning pipes: 3.85 m

CAPACITY

Conference: 250 pax
Gala dinner: 200 pax
Standing: 300 pax

ELECTRIC POWER

90 kw
UPS 500 kw
Generating set 500 kw

HANGING POINTS

100 kg at the center of the angle-iron
fixed on the beam

EMERGENCY EXITS

1 emergency door

EXTRA NOTES

The space is equipped with both load and drainage connections, along with two ducted exhaust air extraction units. No external LED wall is available. The ground floor supports a load capacity of 600 kg per square meter. The area is entirely stair-free, ensuring full accessibility. Inside, it features a total white finish and is defined by two central concrete columns. Access is provided through a private entrance from Dada. The space is also well connected to the Central Point area via a double door, and to the Gallery space through a large sliding gate.

ELECTRICITY

1 x 125 ampere - 400V
2 x 32 ampere - 400V
1 x 63 ampere - 230V
6 x 16 ampere - 230V

AIR/HEATING SYSTEM

9 fan-coils to 1.300 mc/h cad

LIGHTING

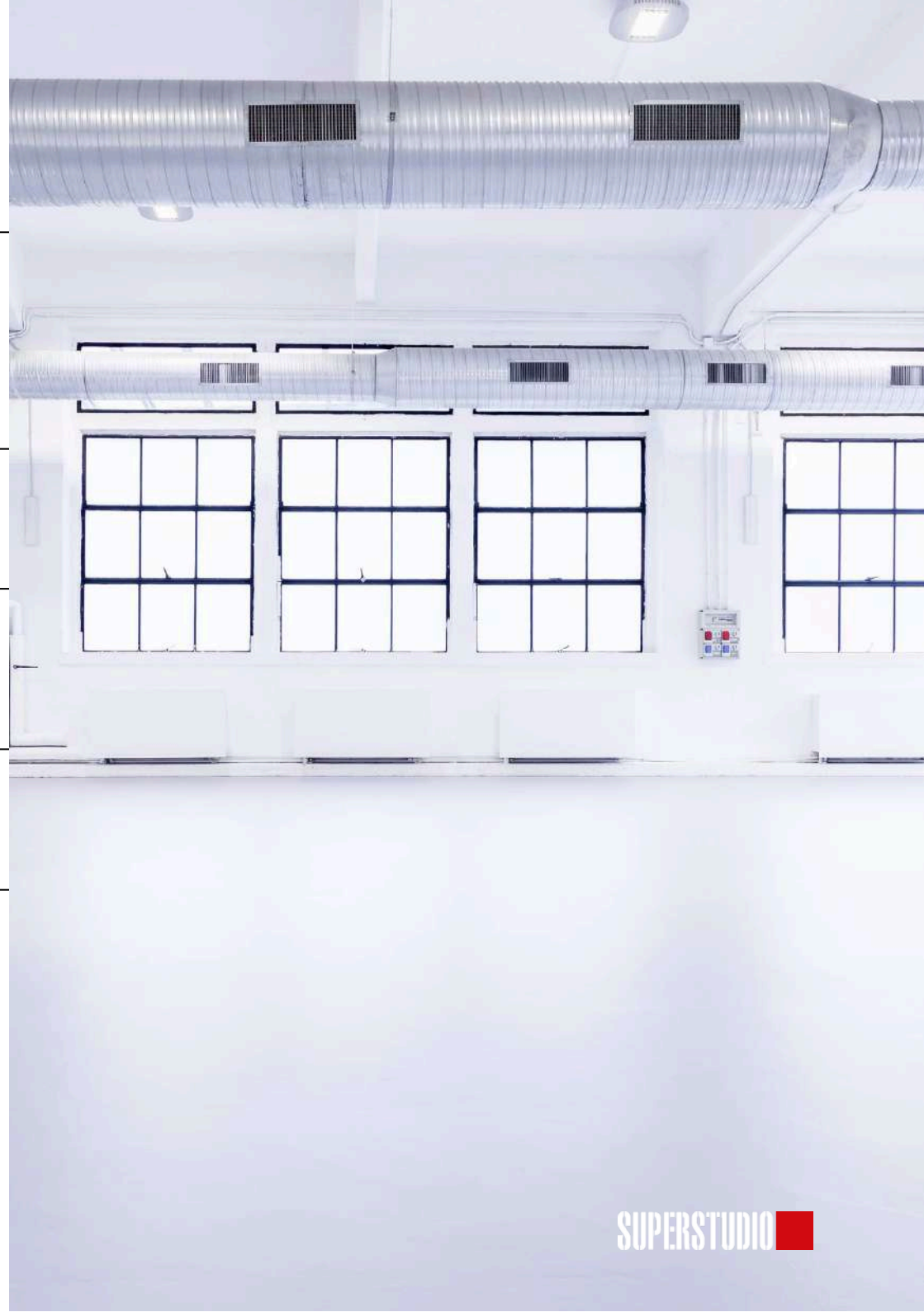
White led - not dimmable - switch on/off:
in two blocks
210 W power per light
4.000 Kelvin

CONNECTIVITY

Free WI-FI 300 Mbps - limited 30 Mbps
/ client
Dedicated WI-FI for the event

TOILETS

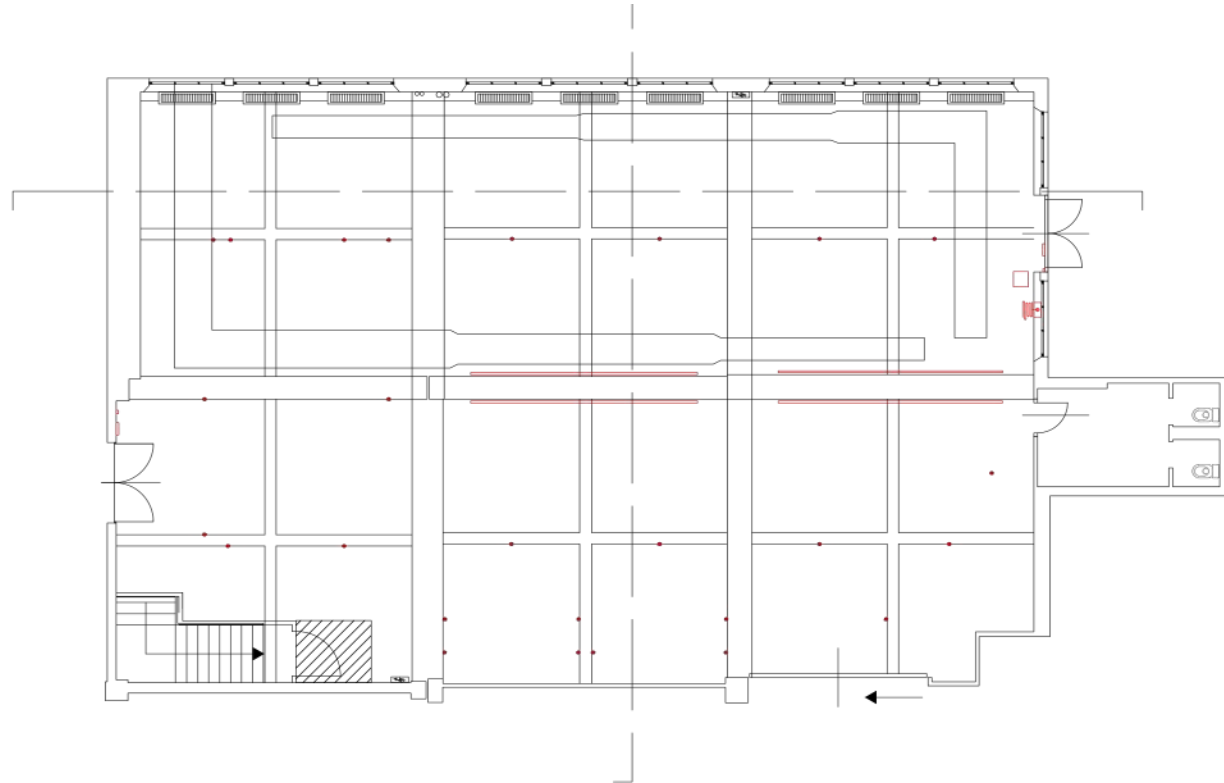
2 toilets in the main room - not
disable bathroom
9 extra toilets integrable based on
availability (Central Point with two
disabled bathroom)



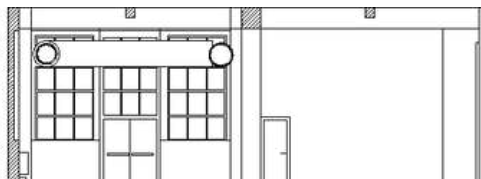
SUPERSTUDIO PIÙ

Loft

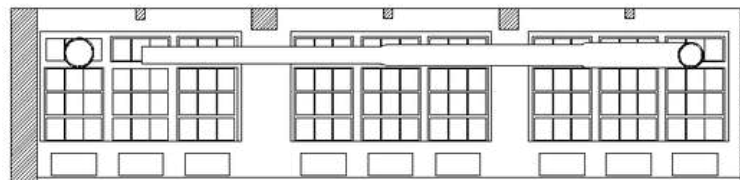
TOP VIEW



SECTION A - A'



SECTION B - B'



SUPERSTUDIO PIÙ

Super Club

DIMENSIONS

Area: 430 sqm

Dimensions: 28.15 x 15.50 m

H max: 3.34 m

H 2,7 m under beam

CAPACITY

Standing: 400 pax

ELECTRIC POWER

32 kw

TOILETS

5 toilets in the main room

2 extra toilets integrable based on availability

EMERGENCY EXITS

2 emergency door

EXTRA NOTES

The room is soundproofed, with dark industrial flooring and an open-space layout. A total black finish enhances the scenographic impact of lighting. The space is equipped with a 3 x 1 m DJ console (1 m high), a 3 x 1 m FOH (Front of House) desk with integrated audio, video and lighting control (also 1 m high), one main bar with 5 bartender stations (2 of which are fitted with beer taps), and one private bar with a single bartender station. Two swings add a playful element to the design, while 15 tables are distributed throughout the room, with 6 in the DJ area and 9 on the dancefloor.

ELECTRICITY

1 x 32 ampere

AIR/HEATING SYSTEM

HVAC 40.000 [mc/h]

Remote system regulation humidity, temperature and air recycling

CONNECTIVITY

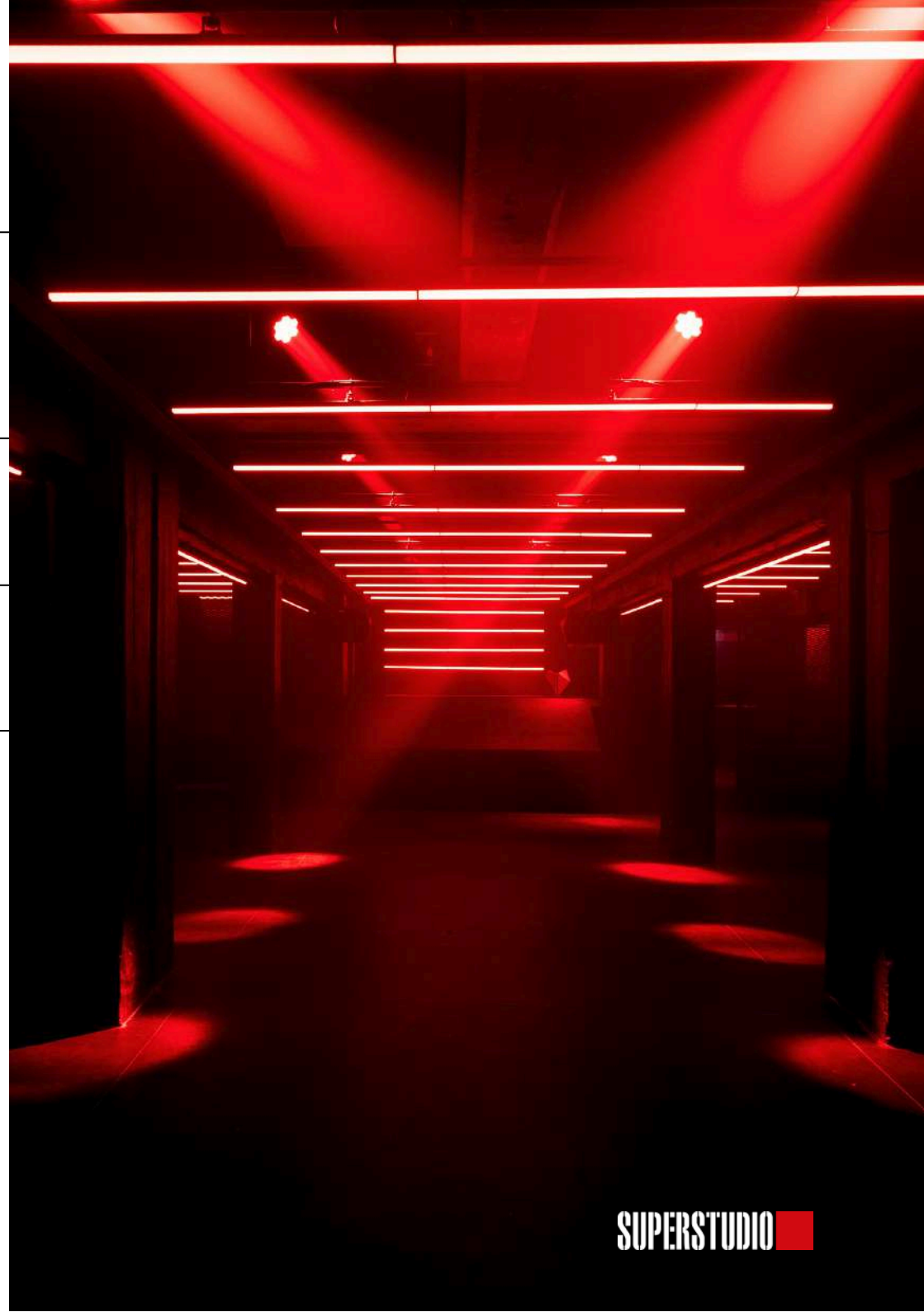
Free WI-FI 300 Mbps - limited 30 Mbps / client

Dedicated WI-FI for the event

LIGHTING

White LED lighting, dimmable via DALI control system.

The space features a fully customizable RGB full color lighting system, with integrated architectural and ambient lights across ceiling, walls and floor. Controlled via dedicated software and operated from a professional lighting desk, the system enables dynamic effects and complete mood adaptation



SUPERSTUDIO PIÙ

Super Club

TOP VIEW



SUPERSTUDIO PIÙ

Art Garden

DIMENSIONS

Area: 1120 sqm

Dimensions: 54.80 x 20.60 m

CAPACITY

Standing: 1000 pax

Gala dinner: 400 pax

ELECTRIC POWER

188 kw

UPS 500 kw

Generating set 500 kw

EXTRA NOTES

There are two water connections available for load and drain.

CONNECTIVITY

Free WI-FI 300 Mbps - limited 30 Mbps / client

Dedicated WI-FI for the event

TOILETS

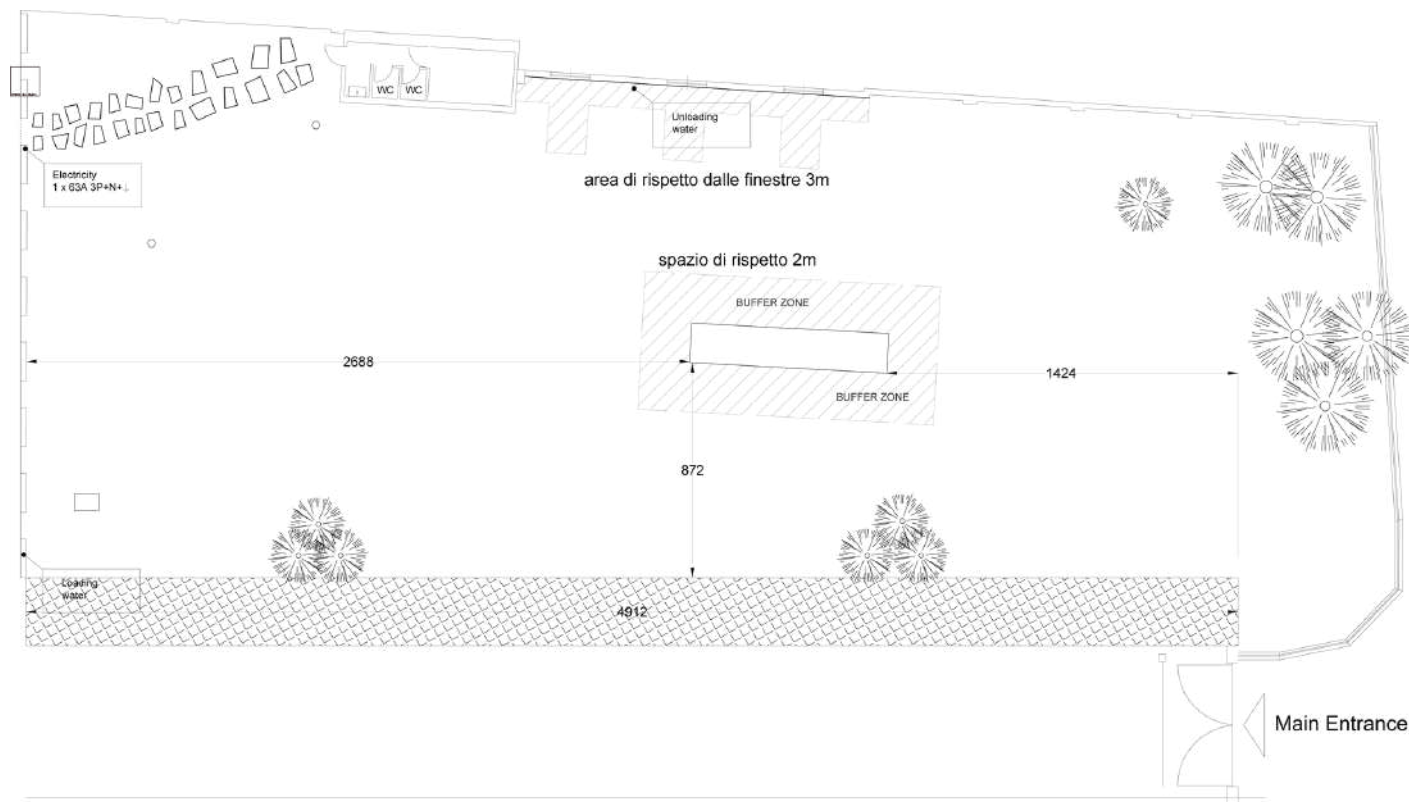
2 toilets in the main room



SUPERSTUDIO PIÙ

Art Garden

TOP VIEW



SUPERSTUDIO PIÙ

My Own Gallery

DIMENSIONS

Area: 236 sqm

Mezzanine: 14 sqm

Terrance: 33 sqm

Ground floor dimensions: 11.50 x 6.50 m

H max: 3.85 m

Foreground dimensions: 18.68 x 5.85 m

H max: 2.94 m

CAPACITY

Conference: 70 pax

Gala dinner: 60 pax

Standing: 150 pax

ELECTRIC POWER

12 kw

EMERGENCY EXITS

2 emergency door

TOILETS

XX toilets in the main room

XX extra toilets integrable based on availability (Central Point with two disabled bathroom)

ELECTRICITY

26 x 16 ampere - 220V

AIR/HEATING SISTEM

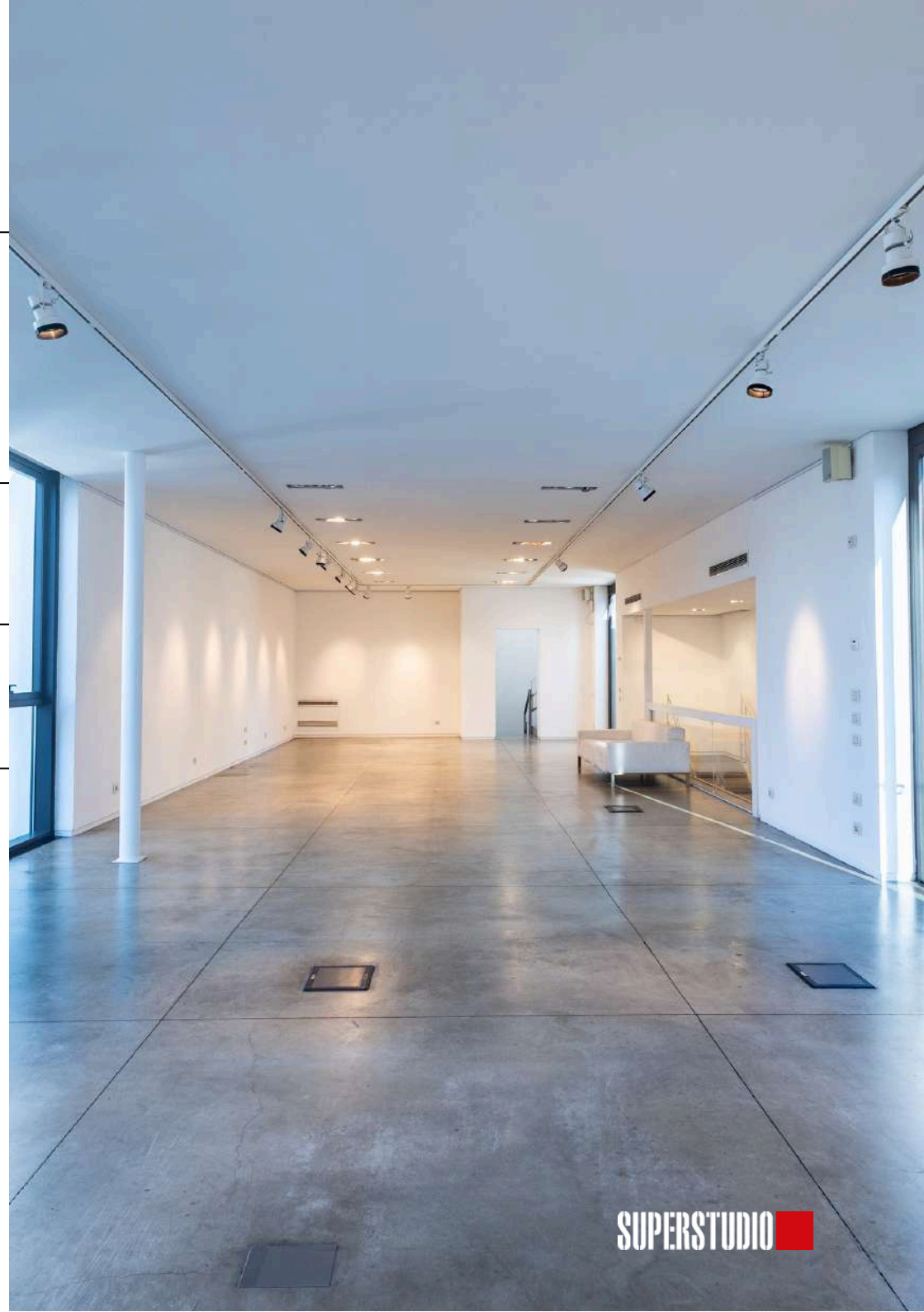
Remote system regulation humidity, temperature and air recycling

LIGHTING

White led and spot

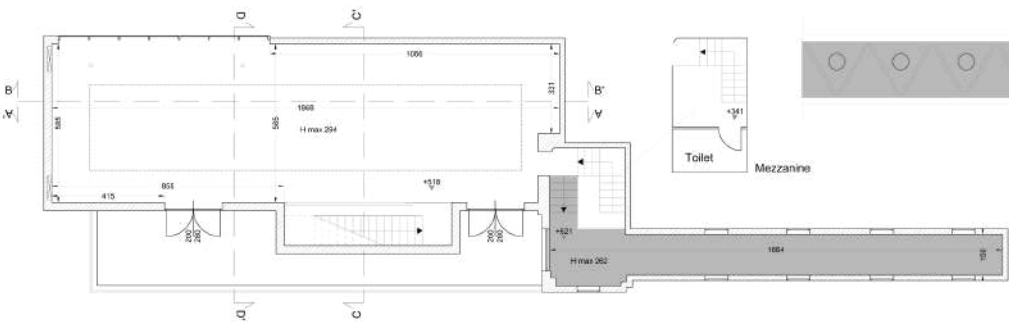
CONNECTIVITY

Dedicated WI-FI for the event

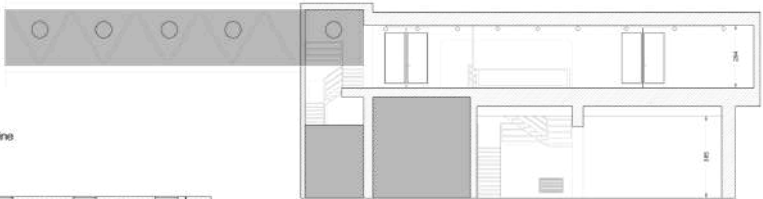


My Own Gallery

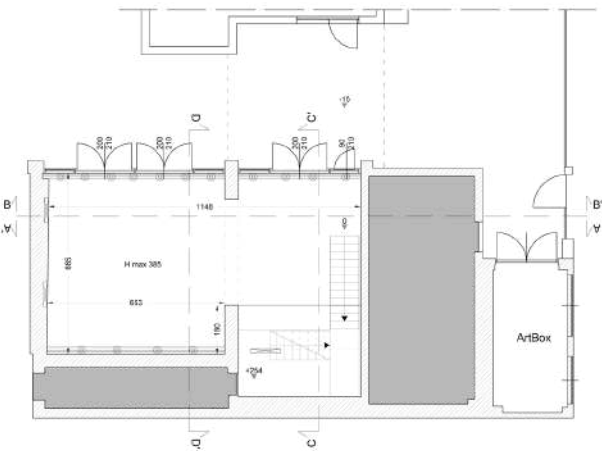
FIRST FLOOR TOP VIEW



SECTION A - A'



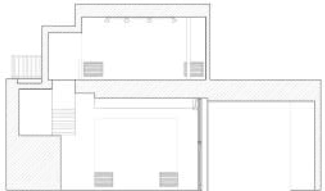
GROUND FLOOR TOP VIEW



SECTION B - B'



SECTION C - C'



NOT USABLE AREAS



SUPERSTUDIO PIÙ

Atelier - FLA

DIMENSIONS

Area: 285 sqm

Dimensions: 17,75 x 16,00 mt

CAPACITY

Standing: 130 pax

TOILETS

1 toilet in the main room

EMERGENCY EXITS

1 emergency door

AIR/HEATING SISTEM

Remote system regulation humidity, temperature and air recycling

CONNECTIVITY

Dedicated WI-FI for the event

TOILETS

1 toilet in the main room



SUPERSTUDIO PIÙ

Atelier - FLA

